

LONG TERM

The long term components of the Master Plan are:

1. Nourishment - To widen and maintain all northern Gold Coast beaches to withstand a 1 in 50 year storm event without exposure of the seawall.
2. Control Points - To provide coastal control points to stabilise the nourished beaches and improve surfing conditions.
3. Seawall - Construction of a continuous ocean front seawall to protect private and public beachfront assets during extreme events.

A THREE STAGE STRATEGY

The Strategy involves three stages. Stage One involved preparation of a Master Plan, which has been adopted by the Gold Coast City Council; Stage Two, presently underway, involves impact assessment studies, design and modelling; and Stage Three will be the commencement of works.

SHORT TERM

In the short term, the components of the Master Plan are to:

1. Pump at least 1.5 million cubic metres of sand to widen the beaches between Northcliffe and Narrowneck.
2. Construct a submerged reef at Narrowneck to stabilise the nourished beaches and to improve surfing conditions.
3. Allow present accretion (build up of sand) southward from the Seaway to continue to Narrowneck to widen the Main Beach beaches.
4. Provide ongoing regular nourishment of at least 60,000 cubic metres of sand per year.
5. Establish a permanent sand pumping pipeline from the Seaway bypass system and Broadwater to facilitate regular sand nourishment.
6. Continue existing policies regarding construction of the ocean front seawall and dune protection.

WHAT HAPPENS IN STAGE 2?

A number of consultants have been appointed to undertake nine different studies into the Strategy, to determine its impact and provide design and testing of its components.

The study areas include: public information, physical and numerical modelling of various elements of the Strategy; social, ecological and economic assessment of the impact of the Strategy and land tenure investigations.

For more detailed information on these studies and the consultants refer to Fact Sheet - The Project and The Consultants.

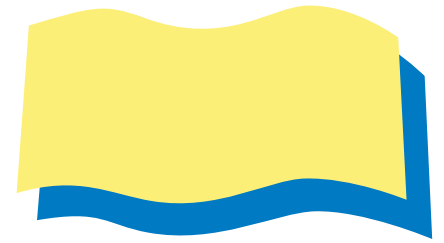
All findings are expected by March 1998, however some may be released sooner.

YOUR CHANCE TO HAVE A SAY

During Stage Two, Gold Coast City Council is encouraging participation in the impact assessment process.

You can offer your opinion or get progressive information by phoning the information line on 07 5581 6433 or access the web site at <http://www.goldcoast.qld.gov.au/>

please
let us know



Gold Coast
Beach
Protection
Northern Strategy



PRELIMINARY SURVEY OF RESIDENTS and VISITORS

Dear Resident/Visitor

The attached information sheet provides information about a proposed beach protection strategy for Gold Coast Beaches.

A dynamic beach system combined with regular storms and occasional cyclones cause erosion to our beaches and threaten beachfront development and recreation.

After intensive study into the problem the Gold Coast City Council have proposed a strategy to widen the beaches, with the assistance of an artificial reef to be constructed at Narrowneck to act as a control point. The reef would be below the waterline and be constructed of sand coloured textile bags filled with sand.

Gold Coast City Council is seeking public input to the strategy and would appreciate your completion of this brief survey which asks about your present beach usage as well as your comments about the strategy. An envelope is provided for you to mail your completed survey to Council. No postage stamp is required. Please return by 28 November.

Yours sincerely,

Gail Broome,
Research Unit
Gold Coast City Council

Public Hotline: Phone (07) 5581 6433 Fax (07) 5581 6346 Web <http://www.goldcoast.qld.gov.au/>

Q1 Are you a (please tick one box only)

- Local resident?
- Visitor from Queensland?
- Visitor from interstate?
- Visitor from overseas?

Q2 Are you a (please tick one box only)

- Male? Female?

Q3 What is your age group? (please tick one box only)

- 18-24 25-34 35-44 45-54
- 55-64 65-74 75 +

Q4 What is your occupation?

.....

Q5 Were you aware of the beach protection strategy before you received this letter?

- Yes No

Q6 How often do you visit/use the beach at Narrowneck? (please tick one box only)

- every day a few times a week
- once a week once a fortnight
- once a month every few months
- a few times a year once a year
- never

Q7 How often do you visit/use the beach between Surfers Paradise and the Spit (excluding Narrowneck)? (please tick one box only)

- every day a few times a week
- once a week once a fortnight
- once a month every few months
- a few times a year once a year
- never

If you answered never to both Q6. & Q7. please go straight to Q10.

Q8 What activities do you use the beach at Narrowneck or between Surfers Paradise and the Spit for? (you may tick as many boxes as you wish)

- walking/exercise swimming
- surfing fishing
- sunbaking family activities
- I do not undertake any activities on the beach but I visit it for its scenic beauty/aesthetic values
- I do not use the beach but value living close by to it
- I do not use the beach at all
- other.....

.....

Q9 How do you think this strategy is likely to affect your beach usage? (please tick one box only)

- positively negatively
- undecided not at all
- don't know



Research Unit

the survey

Q10What do you think will be the main advantages of the strategy?

.....
.....
.....
.....

Q11What do you think will be the main disadvantages of the strategy?

.....
.....
.....
.....

Q12Are there any specific issues you would like Gold Coast City Council to consider in relation to the strategy?

.....
.....
.....
.....

Q13Gold Coast City Council is conducting group interviews with randomly selected residents about their interests and concerns regarding the beach protection strategy. Would you like to be considered for random selection for a group interview?

- yes no

If yes, please provide your first name and telephone number for contact during the day

.....

Thank you very much for your participation in this survey. Your answers will be kept strictly confidential. The results of this survey will be published after completion of the impact studies early next year.

Please return your completed survey form to Gold Coast City Council in the envelope provided. No postage stamp is required. please return by 28 November. Any enquiries please telephone Gail Broome, Research Unit, GCCC. (07) 5582 8831.

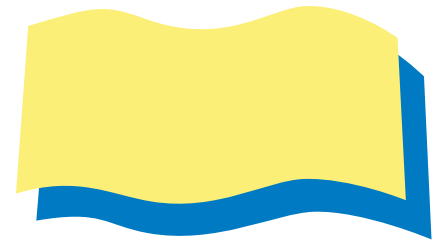


WHAT IS IT?

The Northern Gold Coast Beach Protection Strategy has been developed to

- widen the beach and dunes
- improve surfing conditions

the background



Gold Coast
Beach
Protection
Northern Strategy



Public Hotline: Phone (07) 5581 6433 Fax (07) 5581 6346 Web <http://www.goldcoast.qld.gov.au/>

WHY DO WE NEED IT?

The Gold Coast City Council has long identified the need for its 52 kilometre stretch of beautiful beaches to be protected and preserved. The beaches are one of the region's greatest natural assets and maintaining their condition is of paramount importance for both tourists and residents.

A dynamic beach system (high, powerful waves on an exposed coastline), regular storms and the need to protect beachfront development have all contributed to erosion being an ongoing problem.

Following a series of cyclones in 1967, which caused extensive erosion problems, the Dutch Delft Hydraulics Laboratory was commissioned by the State Government the following year to carry out detailed investigations to determine the local coastal processes, and recommend solutions.

In 1970, the "Delft Report" recommended:

- stabilisation of the river/creek mouths
- nourishment of the beaches and dunes to provide an adequate storm buffer
- restoration and maintenance of native dune vegetation
- regular nourishment
- an ongoing data collection program

As a result, a scheme of works based on this report was incorporated into the Coastal Management plans for the Gold Coast in 1973.

In 1974, 1.4 million cubic metres of sand was pumped from the Broadwater to the beaches between Main Beach SLSC and South Surfers Paradise to restore the beaches to seaward of the boulder wall. This area has survived numerous storms, but further nourishment is needed to provide an adequate long term storm buffer.

The seawall at Narrowneck, constructed in 1923 to protect the newly constructed highway, is regularly exposed by erosion and at such times there is no useable beach at high tide.

Storms in May 1996 again emphasised the vulnerability of the northern beaches to severe storm erosion. The volume of sand currently available in the dune system is not adequate to withstand large storm events.

Several years ago, the Gold Coast City Council recognised the need for more open space in Surfers Paradise, but the only available land was away from the beachfront and the cost of resumption was \$30 million.

THE BEST SOLUTION

The adopted solution to the Gold Coast's erosion problem is beach widening. This is the first objective of the Northern Gold Coast Beach Protection Strategy. The second objective is to create a world class surfing break with the construction of an artificial reef at Narrowneck.

In addition, the Heart of The City Taskforce, a group assigned to improving and remodelling Surfers Paradise, saw the need for enhancement of the foreshore seaward of the Cavill Mall.